

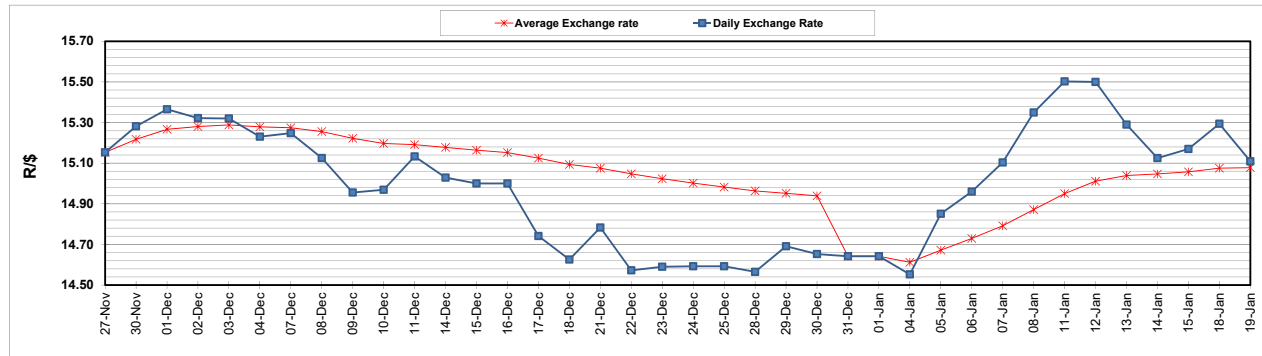
	PETROL 95 ULP	PETROL 93 ULP & LRP	DIESEL 0.05%	DIESEL 0.005%	ILL. PAR.
GAUTENG PUMP PRICE (SA c/l) AS FROM 06/01/2021	1,486.000	1,469.000	-	-	-
WHOLESALE PRICE (SA c/l) AS FROM 06/01/2021	-	-	1,300.420	1,301.820	739.688
SINGLE NATIONAL MAXIMUM RETAIL PRICE	-	-	-	-	930.000
BASIC FUEL PRICE - 19/01/2021 (SA c/l)	604.842	596.525	603.094	604.495	591.010
PRESS RELEASE CONTRIBUTION TO BFP 06/01/2021 - 19/01/2021 (SA c/l)	519.170	512.170	541.630	543.030	527.128
UNIT OVER/(UNDER) RECOVERY - 19/01/2021 (SA c/l)	(85.672)	(84.355)	(61.464)	(61.465)	(63.882)
AVERAGE BASIC FUEL PRICE 31/12/2020 - 19/01/2021	587.281	580.256	586.325	588.245	574.172
AVERAGE UNIT OVER/(UNDER) RECOVERY 31/12/2020 - 19/01/2021	(79.540)	(80.372)	(60.409)	(60.643)	(62.758)

ANALYSIS MOVEMENT OF AVERAGE OVER/(UNDER) RECOVERY

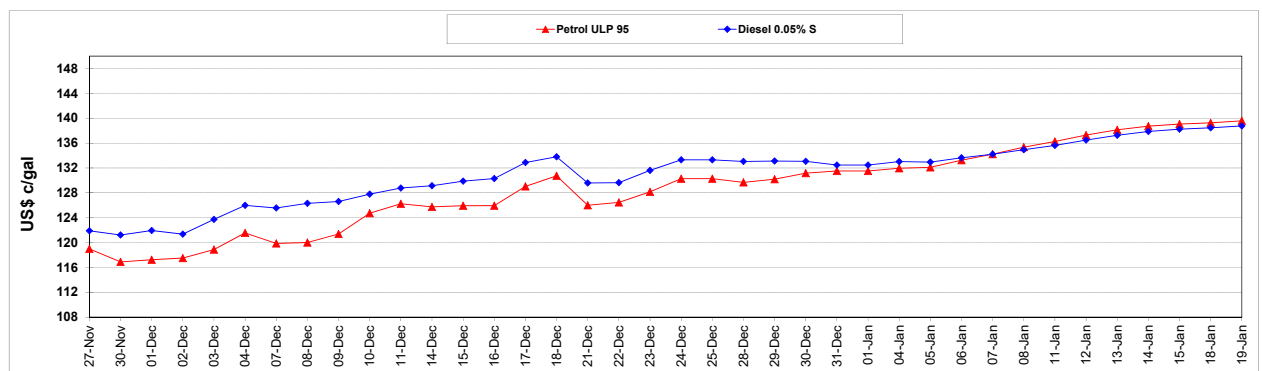
	PETROL 95	PETROL 93	DIESEL 0.05%	DIESEL 0.005%	ILL. PAR.
- MOVEMENT IN INTERNATIONAL PRODUCT PRICES	(74.134)	(75.030)	(55.012)	(55.229)	(57.472)
- MOVEMENT IN EXCHANGE RATE	(5.406)	(5.342)	(5.397)	(5.415)	(5.286)
AVERAGE UNIT OVER/(UNDER) RECOVERY 31/12/2020 - 19/01/2021	(79.540)	(80.372)	(60.409)	(60.643)	(62.758)

R/\$ EXCHANGE RATE - (R/\$15.1093 - 19/01/2021)

EXCHANGE RATE USED IN BASIC FUEL PRICE



INTERNATIONAL PRODUCT PRICES OF BASKET USED IN BASIC FUEL PRICE



BASIC FUEL PRICE IN SA CENTS PER LITRE

